

DWU2250A

802.11n Base Station Unit

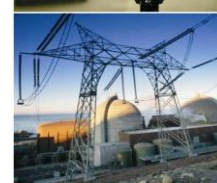
Wireless Connectivity

5.47-5.875GHz



DESCRIPTION

The DWU2250A Series are medium cost, high performance, outdoor high speed duplex wireless broadband connectivity equipments that may be installed to transport data signals as Point to Point (PtP) configurations. Units operate in frequency combination spectrum of 5.47 to 5.875GHz, comply with 802.11a/n and are designed with Time Division Multiple Access (TDMA) MIMO scheme to **provide maximum throughput** without incurring the expense of leased lines or fiber runs. Featured are up to 500Mbps speed, Site Survey analyzing software tool, bandwidth control, 1000Mbps POE port, GPS Synchronization with reset button, SNMP, firmware upgrade and secure Data Encryption. Built with UV stabilized, waterproof enclosures, Series DWU2250A receive/transmit to 50Km distance, meet stringent specifications as temperature, humidity, voltage/transient protection, shock/vibration and are ideal for cost effective commercial and industrial wireless IP video surveillance installations.



FEATURES

- * Wireless Base Station, 5.47 - 5.875GHz, 500Mbps
- * CPE or Base Station Modes of operation
- * Large Scale IP Cameras on Wireless Networks
- * Wireless Drivers provide low Jitter and Latency
Less than 3ms on 50Km with no performance loss
- * Operate as Point to Point, Point to Multi Point
- * MIMO/TDMA design: 20MHz spacing
- * Support 802.11abg and 802.11n standards
- * 10/20/30/40/50/60/80 MHz spacing on PtP
- * 10/20/30/40 MHz spacing on PtMP
- * Security - WPA2 AES Encryption
- * 10/100/1000Mbps RJ-45 Ethernet Port for POE
- * 2 SMA RF Connector External Antennas
- * Link Status and Speed Indicators
- * SNMP, Telnet SSH, PPTP and Web Management
- * Site Survey Software Diagnostics Tool
- * Firmware Upgrade via SSH / TFTP
- * Bandwidth Control; Backup Settings via SSH
- * Wind Survivability to 125M/h (200Km/h)
- * 24VDC input and POE adapter with Reset Button
- * Solar Panel friendly 8.5W power consumption
- * Compliance: IEC68, CE, FCC, ROHS

APPLICATIONS

- * Homeland Security
- * Metropolitan Scale Mesh Networks
- * Petrochemical Industry Networks
- * Corporate and Banking Systems
- * WISP Access Networks
- * Public Safety Access Networks
- * Schools and Universities
- * Government and Military
- * Power Generating Plants
- * Carrier Backbones & Extensions
- * Traffic Surveillance & Management

ORDERING INFORMATION

- DWU2250A-9 Duplex (video-PTZ Data) Wireless CPE/Base Station Unit, 1000Mbps Ports, 5.47GHz - 5.875GHz, 24VDC/POE
- DWU16120-S Sector Antenna, 16dBi, Beamwidth: 137° (H), 118° (V), cross pol isolation 28dB min.
- DWU19120-S Sector Antenna, 19dBi, Beamwidth: 123° (H), 123° (V), cross pol isolation 28dB min.
- DWU2090-S Sector Antenna, 20dBi, Beamwidth: 90° (H), 85° (V), pole mount, RF jumpers
- DWU3055-D Dish Antenna, 30dBi, Beamwidth: 5° (H), 5° (V), pole mount, RF jumpers
- DWU3455-D Dish Antenna, 34dBi, Beamwidth: 3° (H), 3° (V), pole mount, RF jumpers



DWU2250A

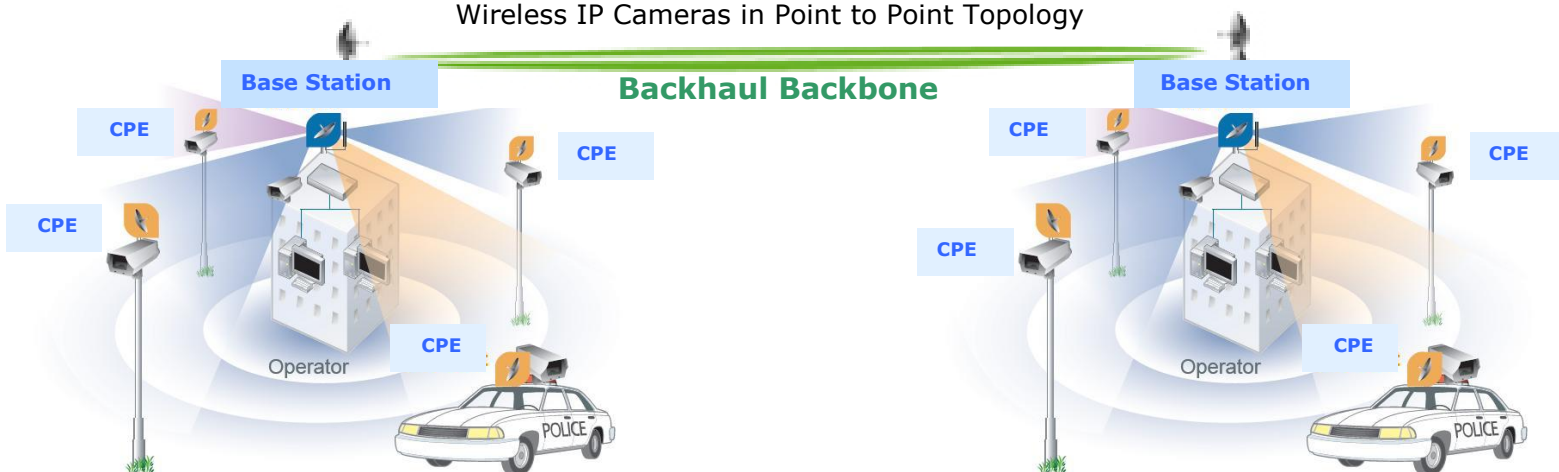
802.11n Base Station Unit

Wireless Connectivity

5.47-5.875GHz



Wireless IP Cameras in Point to Point Topology



Specifications	DWU2250A		
Processor/Memory	Atheros MIPS 74KC, 720 MHz/128MB DDR2 SDRAM, 16MB NOR FLASH	RF Output Power	27dBm
Standards	IEEE 802.11a/b, 802.11n	Sensitivity	802.11a = -94dBm to -75dBm
Support Protocol	TCP/IP IPX NetBEUI		802.11n = -96dBm to -75dBm
Connection Rate Select Modulation	Up to 500Mbps in 801.11n 256QAM		
Communication	Point to Point, Point to Multi Point	SSH Management	Yes
DHCP	DHCP Server, DHCP Client	SNMP	Yes
IP Auto Discovery	Yes	Telnet	SSH
Network Map	Yes	Bandwidth Control	Yes
Access Layer Users	50 recommended	Mass Firmware Upgrade	SSH / TFTP
Spanning Tree	Yes	Backup Settings	SSH
Power Control	Yes	WEP Encryption	WPA2 AES only
Link Status and Speed	Yes with LED Indicators	Radius	Yes
Freq. Scan List	Yes	Diagnostics Tools	Site Survey Analyzing Software
LAN	1 x 1000Mbps RJ-45	WPA1, WPA2	Yes
IEEE802.iq VLAN	Yes	QoS	Yes
Antennas	Available Sector, Dish to 50Km distance 2 x RP-SMA, waterproof	Dimension	420mm(L)×420mm(W)×230mm(H)
Access Reboot	Yes	Weight	4.9 lb/2.2Kg
Access Control	Yes	Operating Temp.	-40~80°C
Power Supply	24VDC/1A; 8.5W consumption (opt, 48V)	Storage Temp.	-20~80°C
PoE Adapter	Available with built-in Reset Button	Humidity	5~95%
Frequency	5.470GHz - 5.875GHz	Shock and Vibration	ETSI300-019-1.4
Channel Width	40MHZ, 20MHZ, others		

